

The Petrified Digest

P.O.Box 303

Wenatchee, WA 98807

Published monthly by:
Ginkgo Mineral Society, Inc.



Red Jasper



In Washington, Red Jasper is most commonly found on the north beaches of the Olympic Peninsula. Red Jasper is also found in cracks and veins of volcanic rocks

February 2022

Next Meeting: February 18, 7pm
Presbyterian Church
200 S. Kentucky East Wenatchee

**Look what's coming
on page 2**

Email ideas, trip notes, or photos to:

ginkgonews@yahoo.com

or to wonderstar@nwi.net

Web page: www.wenatcheerockclub.org

Face Book page: Ginkgo Mineral Society

What's Coming

The February program will be presented by Ron Prang. He will be showing examples of different findings he has found, rather than what we usually order from standard catalogs. Carol Smith will have handouts with addresses and e-mails of nine different companies to order jewelry supplies.

Next month we will have "free-for-all" program about these great Columbia Basins Agates. Anyone who has collected them PLEASE bring them to our March meeting for viewing at a front table. There will be an open discussion about collecting these treasures and some handouts about directions and fun stuff! Rock & Gem magazine had a three-page article about these agates within the last year so people are becoming aware of the history of these rocks and where to find them. Let's GO !!

Program/Education Chair
Carol Smith

From Atop the Rock Pile

Greetings Rockhounds.

It has been my honor and pleasure to serve you as the president of the GMS. Unfortunately, my time in Washington is nearing its end. We have had some wonderful times together and I will treasure the many memories made with you. That said, I am departing for the Carolina's shortly in order to live closer to my family. I plan to conduct the next meeting but it will be my final gathering with you. I leave you in good hands though. You are in for a treat with Helen Hall in charge of activities. You are going to have a blast.

Steven Douglass
President



From the Scribe

Members enjoyed pizza before the meeting was called to order by President Steven Douglass at 7:30 pm. New members present: Bob Hanson, Diane Hanson, and Megan Finley.

Members were asked to sign a get well card for Roy Porterfield, who recently broke bones in his back.

Show & Tell:

David Earhart had several jars of a variety of different rocks for sale on each table.

R. John Montgomery showed Westport beach rocks he collected, mostly jasper.

Marcia Summers drew door prize/raffle tickets. The door prize winner was Janet Clark, and the raffle winner was Pat Russell.

David Earhart presented the Treasurer's Report. He gave a special thanks to Pam Lander for her work coordinating the gift wrap tables at the Mall at Christmas. A record \$1,800 was raised.

Coordinator Reports

Gift Wrapping - Pam Lander reported that the Ginkgo Mineral Society (GMS) sign went missing during the gift wrapping. A discussion ensued about replacing the banner. A suggestion was made by R. John that both a sign and banner be commissioned.

Nason Creek - David Earhart reported there will be a fundraiser event (probably in May) at the Nason Creek Rest Stop west of Cole's Corner on U.S. 2 over Steven's Pass, where we will serve cookies and coffee. Members are asked to donate cookies and sign up for a shift to work the table. Sign up sheets

will be available soon.

Social - David also said there are still vacancies on the Club treats sign-up, with more volunteers needed to bring snacks in March and April.

Field Trips/Activities - Helen Hall is our new Coordinator, and she is already hard at work exploring field trip options, as well as possible additions to our Facebook page to include Events and Activities. Some of the places being considered are West Richland, South Lakeshore Road slide areas, and a mine cut road by Omak. Helen also shared flashlights for showing rocks in the dark.

Meeting adjourned at 8:18 pm.

Carol Turner
Secretary

From the Vault

CD	As of 1/31/2022		\$10,045.07
Savings Account	1/01/22	Interest \$.08	\$1,798.27
Checking Account	1/01/22	Beginning Balance	\$2,205.57
		2 Deposits Memberships Raffle, shop fees	\$265.57
		Checks: Website, newsletter, P.O.Box	
		Christmas wrap, pizza, Gold Show booth	<u>\$688.39</u>
	1/31/22	Ending Balance	\$1,954.18

David Earhart
Treasurer

David's Notes

David reported that the Prospectors Club will have a show in mid-April, with 150 vendors. GMS has a table, and members need to think about items to donate for the show.

He also reported that the Club is selling books (such as Gem Trails of Washington), and badges.

You can pay for your 2022 Ginkgo Membership now. Send money!

Off the Beaten Path

My name is Helen Hall and I am the Club's new Field Trips/Activities Coordinator. I am excited about rockhounding and I started planning weekly trips that began in February. My goal is to get members together on great adventures. I will be working on March trips soon. The snow has put a damper on some areas that I had planned. I have read lots of books, watched videos, and researched the internet for great trips. If anyone in the group knows of any great places for hounding they would like to share for a group outing, please call or message me at 509-679-9755. I have a lot of time and energy to put into trips for the Club. I would like a poll of weekdays or weekends trips. Most likely there will be two of each per month unless the majority votes for one or the other. I have found a new rockhounding site in West Richland that is awesome and easily accessed. A trip is planned for 2/19 at 08:30 the day after our Club meeting. (Ed: See the Activities calendar) I hope to see all of you there. We will do another one in March the day after the meeting per a request.

I am working on a group messaging system for event notifications. My apologies for the first app that I tried called GroupMe. Apparently it messages everyone for every entry. That's not what anyone

wants. I have found another app called "WhatsApp." It has a bright green symbol with a conversation bubble around a phone icon. It can be found in your phone's app store and is free. Before I can add each of you I need to be a contact in your phone. So please add me to your phones - 509-679-9755. This will allow for me to notify you via text of rockhounding trips and club events with ease. I have had requests for email notifications of events. That would require me having your email. So members who prefer email need to email me at hmh0131969@gmail.com.

Till next time. Happy Hounding,
Helen

Ginkgo Field Trips/Activities Calendar

Feb 18	Ginkgo Club Meeting	7 pm Presbyterian Church
Feb 19	Field trip to W. Richland	Meet at Hobby Lobby 8:30 am
Feb 26	? Field Trip to Walker Valley	Mt Vernon
Mar 05	Quincy Lakes Silica Rd	Meet at Hobby Lobby 8:30 am
Mar 18	Ginkgo Club Meeting	7 pm Presbyterian Church
Mar 19	Field Trip to W.Richland	Meet at Hobby Lobby 8:30 am

What's Cookin' By Dan Hanson

I like to cook so when my 11-year-old granddaughter visits we often cook something together. And when I visit her home, we often make quiches in the oven for breakfasts.

Last fall, I was in the kitchen mid-morning with the oven on high when she arrived for a visit. After a quick hug she asked "What's cooking?" and right away "Can I help?"

"Rocks" I said and she laughed. So I had to explain my experiment.

The color of many rocks and faceting rough can be enhanced by various heat treatments and some by radiation. Obviously radiation is not something that can be done at home. But the kitchen oven can be used quite effectively to make color changes in many of the rocks we grind and polish. Heating many faceting rough material is usually more technical and often requires higher temps than the typical home oven can reach so that is a discussion for another time.

To get started with your experiment you will need a metal cake or bread pan and some kitty litter (preferably not "used"). Fill the bottom of the pan with about an inch of kitty litter. Lay the slabs for the experiment in the pan but not touching each other or the sides of the pan. Cover with another inch of kitty litter and put the pan in the oven.

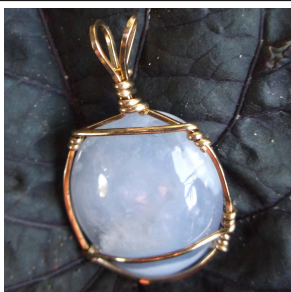
Like all of the actions we do with rocks, it takes patience and time. Start with the oven set to Bake at 200 degrees. Let the rocks come up to temperature then increase the temp 50 degrees about every 10 to 15 minutes to the desired high. See the chart below for a few suggestions. When the temperature has reached the suggested high turn off the oven and let it cool naturally. The best time to experiment is in the evening so you can let the oven cool overnight and then wake up to your colorful rocks .

There are two important questions to be answered in heat treating rocks. One, of course is the question of whether or not a particular rock will actually change color when heated. The second is the question of how to heat the rock without cracking or burning it up. With cabbing rough, the general answer to the first question is if it is some sort of chalcedony and if it has more or less some shade of brown or red, the odds are heat treating will enhance the colors. And if there is some faint or invisible banding, heating may sharpen the banding. The second question is answered by using the kitty litter to insulate the rocks from rapid heating and cooling.

<u>Material</u>	<u>Heat to</u>	<u>Results</u>
Banded Agate	400-450	Darker browns or reds
Petrified Wood	500-600	Intensified rings
Carnelian	500	Darker reds
Gold Tiger Eye	500-550	Bright Red
Chert	280-300	More knappable

Although we won't discuss how to heat treat semi precious gems, you might be interested to know about some common gem stones that are heat treated to make them more valuable. Low in value, amethyst turns yellow to simulate more expensive citrine. Colorless topaz when heated turns much more valuable shades of blue. Green aquamarine can be turned to more popular blue with heat. Most tanzanite is heated to change the depth of color and heating can remove undesirable brown or yellow tints. And most of the world's finest rubies and sapphires are heated to improve color, clarity or both. In the United States, jewelers are suppose to tell customers about artificially enhanced gems but many times jewelers aren't told about any treatments when they buy gems from overseas wholesalers. However, the color and properties of heat treated stones does not revert so if you like the color of a gem and you like the price, it really doesn't matter how the stone got its color.

Market place



Custom Ellensburg Blue jewelry Contact Carol Smith 509.884.3349 for these and other fine items



Richardson High Speed Dry Sander ½ hp 120 vac motor. \$445.00 Uses a 7-inch silicone carbide paper disk available from Richardsons at 541.475.2680



Richardson Buffer – ½ hp 120 vac motor. 12-inch leather buffing disc. \$345.00

Contact Don Deycous at 509.754.2946 if you are interested in these items.

Officers

President	Steven Douglass	509.885.2213
Vice President	Carol Smith	509.884.3349
Secretary	Carol Turner	509.424.2161
Treasurer	David J. Earhart	509.860.0988

Coordinators

Field Trips/Activities	Helen Hall	509.679.9755
Shop & Equipment	Carl Pederson	509.884.6940
Program/Education	Carol Smith	509.884.3349
Social	Marge Porterfield	509.679.3440
Chelan Fair	Dan Hanson	253.318.6616
Museum	Richard Congdon	509.886.2410
Newsletter	Dan Hanson	253.318.6616
Website	Dan Hanson	253.318.6616
Rock Auction	Bob Spurrier	509.881.8096
Christmas Wrap	Pam Lander	509.884.5135
Nason Creek	David J. Earhart	509.860.0988

Grit for club members



Graded 30	\$4.00 lb
Ungraded 60/90	\$4.00 lb
Graded 220	\$4.00 lb
Graded 600	\$4.00 lb
Polish	\$7.00 lb



The **Ginkgo Mineral Society** was formed to promote the education of mineralogy and geology; to encourage the collecting of rocks and minerals; to provide field excursions to mineral collecting areas; and to promote interest in lapidary work.

Dues: Individual—\$20.00 Senior—\$15.00 Family—\$30.00 Lifetime (20+ years) - Free

Please mail your dues to Ginkgo P.O.Box 303, Wenatchee, WA 98807

Club information cards are available to handout to folks who show interest in our hobby. See David Earhart for cards to carry with you.

Shop Talk

The Ginkgo Club workshop is located at Christy Price's home: 4325 Squilchuck Rd., Wenatchee. Christy asks that we don't use the shop on holidays but any other time is fine. Check the Ginkgo Mineral Society Facebook page to see if someone may be opening the shop. Club officers and the shop foreman have a key to open the shop.

Washington State Mineral Council

For more information:

mineralcouncil@zoho.com or <https://mineralcouncil.wordpress.com>

March 2022 11 th 8:30am-6pm 12 th 9am-5pm	Panorama Gem & Mineral Club	Annual Show	Stevens County Fairgrounds Ag & Trade Center 317 West Astor Colville, WA
March 2022 25 th 10am-6pm 25 th 10am-6pm 27 th 10am-4pm	Rock Rollers Club of Spokane	Annual Gem, Jewelry and Mineral Show Adults \$6, Scouts in uniform and children under 12 free	Spokane County Fair & Expo Center N. 404 Havanna Spokane WA