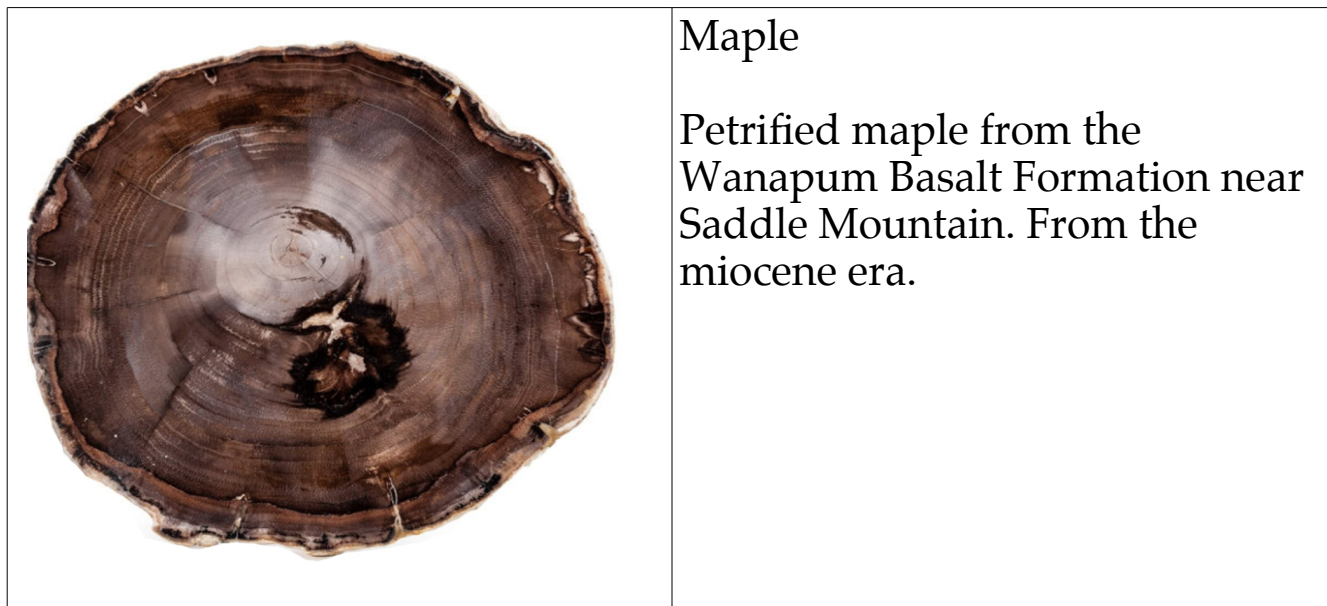


# The Petrified Digest

P.O.Box 303

Wenatchee, WA 98807

Published monthly by:  
Ginkgo Mineral Society, Inc.



## Club Officers

|                |                  |  |
|----------------|------------------|--|
| President      | Carol Smith      | 509.884.3349                           |
| Vice President | Pat Russell      | 509.421.1307                           |
| Secretaries    | Michelle Giard   | 509.679.4605 & Pam Lander 509.884.5135 |
| Treasurer      | David J. Earhart | 509.860.0988                           |

## September 2023

|   |   |
|---|---|
| <p><b>Next meeting:</b><br/><b>June 16 at 7 pm</b><br/>Presbyterian Church<br/>200 S. Kentucky East<br/>Wenatchee</p> | <p>Email ideas, trip notes, or photos to:<br/><a href="mailto:ginkgonews@yahoo.com">ginkgonews@yahoo.com</a><br/>or to <a href="mailto:wonderstar@nwi.net">wonderstar@nwi.net</a></p> <p>Web page: <a href="http://www.wenatcheerockclub.org">www.wenatcheerockclub.org</a></p> <p>Face Book page: Ginkgo Mineral Society</p> |
|---|---|

## Coming Events

Nominations for Club officers takes place in October with election at the November meeting. Your Club functions because you enjoy the hobby and volunteer the time to make it function. We will need the following officers:

President Vice President Secretary  
 Treasurer – David Earhart has agreed to continue in this office

We also need the following Committee Coordinators:

Program/Education Social  
 Rock Auction Website/Facebook

Ken Hemberry has volunteered to do the newsletter.

Thea Stender has volunteered to coordinate the Museum and the Chelan County Fair.

Please consider supporting the Club in one of these functions.

## From the Vault

|                  |         |   |                 |
|------------------|---------|---|-----------------|
| CD               |         |   | \$10,113.01     |
| Savings Account  | 7/28/23 | w/interest  | \$1799.68       |
| Checking Account | 8/01/23 | Beginning Balance   | \$2,684.65      |
|                  |         | Deposits: auction, membership, equip sale                             | 3,209.00        |
|                  |         | 7 Checks: Meeting room, storage rent,<br>newsletter, auction supplies |                 |
|                  |         | auction supplies, postage   | <u>(532.56)</u> |
|                  | 7/28/23 | Ending Balance  | \$5,361.40      |

## Club Picnic and Rock Auction

The Club picnic and Rock Auction were a great success. The weather cooperated and the food was excellent. Thank You to all of you who brought such tasty dishes!

The Live Auction was very entertaining led by auctioneer Gregg Stanford. Thank You Gregg for a lively and spirited time. Finally a huge Thank You to those who contributed items, to those who cleaned and organized the rocks, and to those who set up tables, carried buckets and show boxes, and cleaned up after the event.



Early Silent bidding

Live Auction bidders lined up

Last minute Silent bidders

Winners settling accounts

Relaxing for the Live action

Details of Rock Auction sales

|                         |               |
|-------------------------|---------------|
| 13 buckets at \$10 each | \$130.00      |
| Live Auction            | 1,504.00      |
| Silent Auction          | <u>595.00</u> |
| Gross                   | \$2,234.00    |

|                           |          |
|---------------------------|----------|
| Expenses                  | (192.00) |
| shoe boxes, buckets       |          |
| picnic supplies (chicken) |          |

|              |            |
|--------------|------------|
| Net proceeds | \$2,042.00 |
|--------------|------------|

## Nason Creek Rest Stop Fundraiser

The Nason Creek Rest Stop Fundraiser has been canceled.

### Where's the equipment

Several of our members have graciously provided homes for our shop equipment. They will make the equipment available to Club members by appointment so we can still cut and polish the stones we collect. But please don't expect them to teach you how to use the machines. Here is the list of equipment with phone numbers to call to arrange an agreeable time.

- Marcia Summers - a Genie 509.860.7556
- Dave Stender - a Genie and trim saw 509.630.1176
- Jodi Rose - a Genie and trim saw 509.763.9402
- Carl Pederson – 18-inch slab saw (\$2.00 per cut) Faceting machine 509.630.8239
- Pam Lander – 10-inch slab saw 509.884.5135

### Chelan County Fair

We had more items entered at the Fair this year than in the past 4 years. And the quality of workmanship was outstanding. Thank you to everyone who submitted pieces to be judged. Best of Class ribbons went to Pam Lander, Carl Pederson, Carol Smith and Susan Oglebay – congratulations!



|  |   |
|--|---|
| <p style="text-align: center;">Gregg Stanford</p>  <p style="text-align: center;">Carl Pederson</p> | <p style="text-align: center;">Thea Stender</p>  <p style="text-align: center;">Dena Hanson</p> |
|  <p style="text-align: center;">David Earhart</p>   |  <p style="text-align: center;">Dan Hanson</p>  |
|  <p style="text-align: center;">Chuck Watkins</p>  |  <p style="text-align: center;">Pam Lander</p>   |

## A Personal Note

This is the last newsletter I will publish. It has been a great pleasure to provide you with information and facts for the last 4 years. Ken Hemberry has volunteered to take over this monthly duty to keep you informed. Please give him all the support you have given me.

## Market Place

|   |   |   |
|---|---|---|
|  |  |  |
|---|---|---|

Custom Ellensburg Blue Contact Carol Smith 509.884.3349 for some very reasonably priced items

The **Ginkgo Mineral Society** was formed to promote the education of mineralogy and geology; to encourage the collecting of rocks and minerals; to provide field excursions to mineral collecting areas; and to promote interest in lapidary work.

Dues: Individual—\$20.00 Senior—\$15.00 Family—\$40.00 Lifetime (20+ years) - Free

Please mail your dues to Ginkgo P.O.Box 303, Wenatchee, WA 98807

**Club information cards are available to handout to folks who show interest in our hobby. See David Earhart for cards to carry with you.**

**Coordinators**

|                   |                |              |                |                  |              |
|-------------------|----------------|--------------|----------------|------------------|--------------|
| Membership        | Marcia Summers | 509.860.7556 | Nason Creek    | David J. Earhart | 509.860.0988 |
| Field Trips       | Jodi Rose      | 509.763.9402 | Christmas Wrap | Pam Lander       | 509.884.5135 |
| Shop & Equipment  | Carl Pederson  | 509.884.6940 | Rock Auction   | Carol Smith      | 509.884.3349 |
| Program/Education | Carol Smith    | 509.884.3349 | Website        | Open             |              |
| Social            | Open           |              | Newsletter     | Ken Hemberry     | 509.699.9450 |
| Chelan Fair       | Thea Stender   | 509.630.1391 | Museum         | Thea Stender     | 509.630.1391 |

**Washington State Rock and Gem shows**

| Date & Time  | Club                          | Show                  | Location   |
|--|-------------------------------|-----------------------|--|
| September 2023<br>16th 10am - 5pm<br>17th 10am - 4pm | Cascade Mineralogical Society | 75th Anniversary show | Green River College 12401 SE 320th St Auburn, WA |